



Millthorpe
School

Moving to Millthorpe



Welcome to Millthorpe School



Hello again to all of our new students and their families. We hope that you found last weeks' edition of *Moving to Millthorpe* useful and we further hope that this one gives you lots more helpful information and leaves you feeling like you know Millthorpe even better.

This edition focuses on some key aspects of life at Millthorpe School; how we use 'Learning Conduct' to encourage you to make the most progress possible and what rights and expectations we all follow and how we reward students and apply

sanctions for those that do not follow our shared rights and expectations.

Again, there is lots of information to take in, so you do not need to read it all in one go or remember everything. We will go through all of this with you again in

September and will support you to understand what we expect from you as you settle in to your new school.

Take care and see you all soon!

Mr Baybutt

Exploring the 3 Rs at Millthorpe

What do you expect from me?

At Millthorpe, we have very high expectations in terms of attitude to learning and behaviour and we always encourage everybody '**to be the best that we can be.**' This is underpinned by the **3 Rs**, which we expect of everyone in school.

Respectful,
Responsible, Ready.

Respectful we are a warm and inclusive community that is built on relationships of mutual respect and kindness. We recognise and embrace individuality and diversity. We insist on treating each other with dignity and respect and we work hard to ensure that everyone has the right to learn and to feel safe at all times. We understand the importance of happiness in our community and that everyone needs to feel cared for in order to be the best that we can be.

Responsible the school is responsible for knowing all of our students and designing a broad and balanced curriculum, taught by specialists, that reflects the different needs of our learners. We work together to support our own success and that of others to achieve our aspirational goals. We promote gold standard learning, having high expectations for all by encouraging them to think and work hard. We know that being responsive to support and feedback enables us to become successful. We understand how important it is to be healthy physically and mentally. We strive to be resilient in the face of adversity and challenge and know that we have to be responsible to be the best that we can be.

Ready we work together with staff, students, and parents to ensure that we are always ready and able to learn. Students are



ready for life beyond school through an extensive personal development programme and enrichment opportunities. We ensure that we are well organised, prepared and we are motivated to become successful. We recognise that this will involve perseverance and we understand that failure is part of our journey to success. We understand that we need to be engaged, motivated and aspirational to be the best that we can be.

Encouraging you to be your best...

We want you to come to Millthorpe and have an amazing time: make lots of new friends, join new clubs, enjoy the trips and extra-curricular activities, and make many happy memories (more on all of these later editions of *Moving to Millthorpe*).

But we are also here to make sure that you are learning to the best of your ability and are making excellent academic progress. To help us to do this, all students are encouraged to **Go for Gold** on their Learning Conduct. We use the phrase **Learning Conduct** to describe the characteristics and expected learning behaviours of a student who is aiming to be the best that they can be and make the most progress that they possibly can.

GRADE	DESCRIPTION OF BEHAVIOURS
4 GOLD	<ul style="list-style-type: none"> ■ Highly motivated and engaged; effort is consistent and sustained ■ Contribution in class is active and sustained ■ Always responds well to challenge and perseveres when work is difficult ■ Will take active steps to find out more without prompting ■ Is always motivated to respond positively to feedback and improve work ■ Both oral and written work are always the best that the student can produce. ■ Meets deadlines and completes homework to the highest standard ■ Works highly effectively independently and with peers treating all students and staff with dignity and respect at all times

Students who achieve a Learning Conduct of 4 (Gold) across all or most subjects are rewarded each term. Those whose Learning Conduct is a cause for concern will be supported to make the improvements that they need. **Learning Conduct is completely different to how academic (or good at school work) you are.** Even if you struggle with your learning, this is about your



effort and attitude to learning so we expect all students to "Go for Gold." We will help you to achieve this; we just ask you to try your best and have a really positive attitude to learning.

Be your best:

Rights, expectations, rewards and sanctions

Rewards

We are currently working on a way to develop and improve our rewards system so there will be an update once you start at Millthorpe. You will be given an **R** in your planner when you show that you are meeting the 3 Rs. This can be in lessons or around school and you will get lots of them, providing you go 'above and beyond' to show that you are meeting the 3 Rs. You will get R's when you show that you are **Respectful** – where you are kind to your classmates or are respectful towards somebody else. You will get them when you show that you are **Responsible** – where you are a Gold Standard learner, keep trying when you find something difficult, or respond positively to support or feedback from a teacher. And you will get them when you show you are **Ready** – you are on time, in full school uniform, with all of your equipment and start your work straight away.

The more R's you get, the better the reward will be. More on exactly how we will reward you in September!

Sanctions

Like all schools, we do have to have sanctions if a student makes a mistake. We are fair and reasonable; just what we expect you to be. If you make a mistake in lessons or around school, you will be given a **Point** in your planner. If a student gets **five Points**, they will be given a **30 minute after-school detention**.

If there is an issue in a lesson, your teacher will work with you and support you to make better choices. For example, if you disrupt the learning of others, your teacher will remind you of our **3 Rs expectations** and will place your planner on their desk as a visual reminder to improve. If you continue to disrupt the learning, you will receive a **Point**, which is written into your Planner so your parents/carers and Form Tutor can

see. Your teacher will further support you to make an improvement but if the poor behaviour carried on, you would receive a second **Point** and your teacher would then try another strategy to help you to improve.

In the highly unlikely event that a student continued to disrupt the lesson after lots of support and two **Points**, they would be given a third **Point** and a **60 minute after-school detention**. The student would also be taken out of the lesson so that other students can work without disruption and they can learn to the best of their ability.

This happens very rarely at Millthorpe School and the vast majority of students never get any after school detentions so please don't worry! If a student receives a number of **Points**, they clearly need some support to meet the 3Rs, so they would go on **Form Tutor Report** so that their Form Tutor can help them to secure improvements.



Be your best:

Rights, expectations, rewards and sanctions

Anti-Bullying

Every year that we have visited our new students in their primary schools, some students ask about bullying and it is normal that this might be something that you may be worried about.

Please let us reassure you that bullying is very unusual at Millthorpe and we are clear that it is totally unacceptable.

That said, all good schools understand that bullying could happen anywhere, and they have a clear plan in place just in case it does. At Millthorpe, we have a very clear anti-bullying policy. This is explained on a page in your Planner and it is also on our website.

In simple terms, if something happens that upsets you or you are unhappy about, just let



us know; we take all concerns seriously and ensure they are dealt with promptly.

You can speak to your Form Tutor, Deputy Head of Year, Head of Year or any other member of staff in school. There is also

a **Report Bullying** button on the school website or you can speak to a friend, an older student, one of the Student Leaders or your parents/carers and ask them to speak to a member of staff for you.

Be your best:

Rights, expectations, rewards and sanctions

Will you help me to make sure that I get it right?

Of course we will! All of the teachers in school will work with you and support you to make sure that you are making positive choices and meet our expectations.

Your Form Tutor, Deputy Head of Year and Head of Year will also help you if you need further support.



Miss Forrester
Head of Year



Mrs Roberts
Deputy Head of Year

We will all work together to make sure that everyone is **Respectful**,

Responsible and **Ready** so that we can be the best that we can be.

We will send you an introduction to your Form Tutor in a few weeks so that you know who they are, what they look like, and can find out a little bit about them. Your **Head of Year is Miss**

Forrester, and your **Deputy Head of Year is Mrs Roberts**.

What other support is available at Millthorpe School?

Every student is different and at Millthorpe, we work with everyone to make sure that they are included, are able to learn and are able to take full advantage of the wonderful opportunities that are available.

Some students may need a bit of additional support which is different to what other people need. They may have a specific need or require help in a particular area. We will work with you and your families to make sure that we provide the correct support for you. We will send another document to you soon, which is a

welcome from, and introduction to our **Inclusion Department**.

If you have a special education need, medical condition, disability or just need a little bit more support, please look out for this in the coming weeks as this will hopefully explain to you the support on offer and answer any questions that you may have.



Be your best: Answers to FAQs

1 What happens if I do not demonstrate the 3Rs

We expect everyone in school to demonstrate the 3Rs and to become the best that we can be. If you are struggling to do this, the staff in school will help and support you to make sure that you can. You might need to serve detentions or go on Report to your Form Tutor if you deliberately do not meet the 3 Rs. We will help you with this, but you must come to Millthorpe with the right attitude and approach.

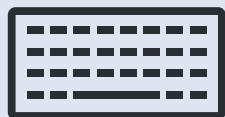
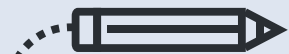
2 What are the other levels for Learning Conduct?

As we said, we want everyone to aim for Gold. The other three levels are Green, Amber and Red. We will explain what each of the levels means when you join us. Students who reach Gold tend to be really successful at Millthorpe and achieve above their expected grades; students who reach Green tend to do as expected – these are the learning behaviours that we want all students to demonstrate. Students who get Amber or Red learning conduct scores are not trying hard enough and we will work with them to improve.

3 If I did get a detention, what would happen in that time?

In the unlikely event that you had to serve an after-school detention, you would be expected to reflect on what had gone wrong to result in a detention. A member of staff might come and talk to you about what happened, or we might ask you to write down a reflection. The aim is for you to understand what went wrong and why, and then think of a plan for how you can improve and avoid getting another detention.

If your detention is because you have not completed your homework after being given an extension, you would need to complete your homework in this time. The sanction is needing to serve the detention; we won't be unpleasant towards you or make you write lines! But remember, most students never need to serve after-school detentions.



Be your best: Answers to FAQs

4 What happens if I forget to go to a detention?

The sanction will be increased. If you did not attend a 30 minute detention, you would get a 60 minute detention.

If you did not attend a 60 minute detention, you would need to serve a lunchtime detention **and** the after school 60 minute detention. If you forgot to attend either of these, you would be placed in **Internal Exclusion** for three lessons the next day and would still need to serve the lunchtime and 60 minute after school detention.

As you can see, the sanction just increases and does not go away, so in the unlikely event that you do get an after school detention, make sure you serve it at the lowest possible level.

Your parents will have been informed via a text message, your Form Tutor will inform

you in Registration in the morning, and your Period 5 teacher will tell you at the end of the lesson and will walk you to the detention if needed.

So, it is really unlikely that you would 'forget'. Of course, the best course of action is to avoid getting detentions altogether – just like most students at Millthorpe!

5 What rewards can we look forward to?

The more **R**s you get in you planner, the better the reward will be! Students who achieve lots, or students who consistently achieve Gold on their Learning Conduct can look forward to rewards. We are working on ways to improve these

at the moment, but things like positive letters home, shopping gift vouchers, termly prizes like Christmas gifts or Easter eggs, having your name displayed on the **Praise Board** and a Golden Ticket to bypass the queue at break or lunch with a friend are all ways that we currently reward students.

We also hope to be able to arrange some reward trips for students who get lots of **R**s.





Be your best: Answers to FAQs

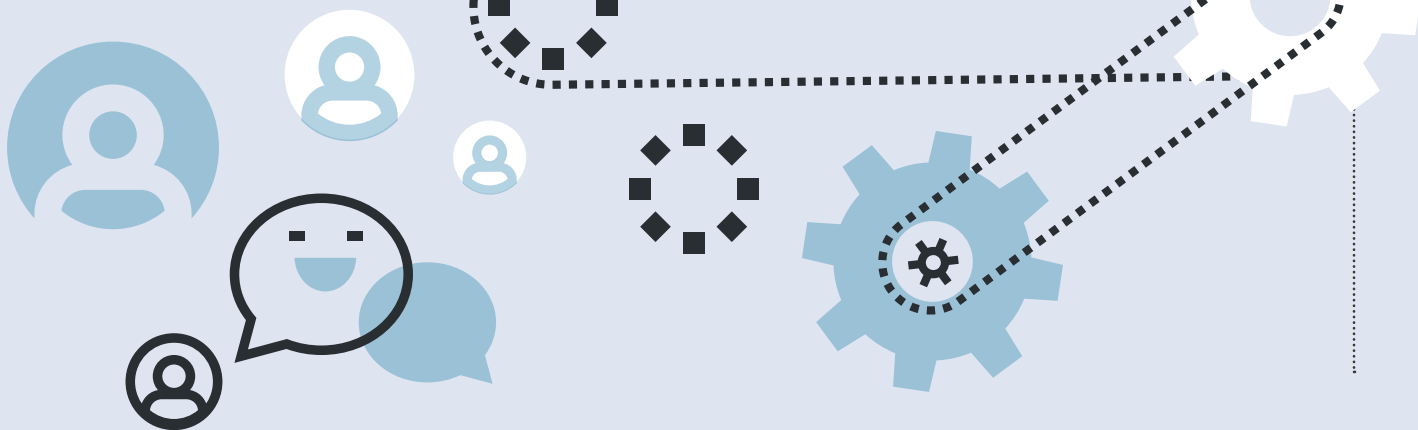
6 What do I do if I am really worried about bullying?

It is natural to be a little bit nervous about bullying as you move to a new, and bigger, school. Try to not worry, as we simply do not tolerate bullying at Millthorpe. If you are really worried, make sure that you talk to your Form Tutor and they will help to put your mind at ease. They will also help you to make friends and join clubs if you need some support.

7 Who will help me to meet expectations?

The first person is yourself! Make sure that you arrive with a positive attitude and a desire to be the best that you can be. Of course, your family will also help you with this. In school, every member of staff will support you to make sure that everything goes well.

Your subject teachers, Form Tutor, Deputy Head of Year, Head of Year, the rest of the Pastoral Team, the Senior Leadership Team and also you peers; your classmates and older students who can offer you help or advice. The Inclusion Team can also provide additional support if you need it.



See you all soon...

Thank you reading all of this information. Next week's edition of *Moving to Millthorpe* will cover your new school uniform, fun activities, clubs, trips, and some 'Top Tips from Year 7s.' Look out for this next Friday! In the meantime, take care and see you all soon!

