



Millthorpe
School

Moving to Millthorpe



Welcome to Millthorpe School



Hello again to all of our new students and their families. We hope that you found last weeks' edition of *Moving to Millthorpe* useful and you feel like you know Millthorpe a little bit even better.

This edition has lots of information to take in, so you do not need to read it all in one go or remember everything. We will go through all of this with you again in September

and will support you to understand what we expect from you as you settle in to your new school. **Take care and see you all soon!**

Miss Boyd

Exploring the 3 Rs at Millthorpe

What do you expect from me?

At Millthorpe, we have very high expectations in terms of attitude to learning and behaviour and we always encourage everybody **'to be the best that we can be.'** This is underpinned by the **3 Rs**.

Respectful,
Responsible, Ready.

Respectful we are a warm and inclusive community that is built on relationships of mutual respect and kindness. We recognise and embrace individuality and diversity. We insist on treating each other with dignity and respect and we work hard to ensure that everyone has the right to learn and to feel safe at all times. We understand the importance of happiness in our community and that everyone needs to feel cared for in order to be the best that we can be.

Responsible the school is responsible for knowing all of our students and designing a broad and balanced curriculum, taught by specialists, that reflects the different needs of our learners. We work together to support our own success and that of others to achieve our aspirational goals. We promote gold standard learning, having high expectations for all by encouraging them to think and work hard. We know that being responsive to support and feedback enables us to become successful. We understand how important it is to be healthy physically and mentally. We strive to be resilient in the face of adversity and challenge and know that we have to be responsible to be the best that we can be.

Ready we work together with staff, students, and parents to ensure that we are always ready and able to learn. Students are



ready for life beyond school through an extensive personal development programme and enrichment opportunities. We ensure that we are well organised, prepared and we are motivated to become successful. We recognise that this will involve perseverance and we understand that failure is part of our journey to success. We understand that we need to be engaged, motivated and aspirational to be the best that we can be.

Encouraging you to be your best...

We want you to come to Millthorpe and have an amazing time: make lots of new friends, join new clubs, enjoy the trips and extra-curricular activities, and make many happy memories.

We are also here to make sure that you are learning to the best of your ability and are making excellent academic progress. To help us to do this, all students are encouraged to **Go for Gold** on their Learning Conduct. We use the phrase **Learning Conduct** to describe the characteristics and expected learning behaviours of a student who is aiming to be the best that they can be and make the most progress that they possibly can.

GRADE	DESCRIPTION OF BEHAVIOURS
4 GOLD	<ul style="list-style-type: none"> ■ Highly motivated and engaged; effort is consistent and sustained ■ Contribution in class is active and sustained ■ Always responds well to challenge and perseveres when work is difficult ■ Will take active steps to find out more without prompting ■ Is always motivated to respond positively to feedback and improve work ■ Both oral and written work are always the best that the student can produce. ■ Meets deadlines and completes homework to the highest standard ■ Works highly effectively independently and with peers treating all students and staff with dignity and respect at all times

Students who achieve a Learning Conduct of 4 (Gold) across all or most subjects are rewarded each term. Those whose Learning Conduct is a cause for concern will be supported to make the improvements that they need. **Learning Conduct is completely different to how academic you are.** Even if you struggle with your learning, this is about your



effort and attitude to learning so we expect all students to "Go for Gold." We will help you to achieve this; we just ask you to try your best and have a really positive attitude to learning.

Be your best:

Rights, expectations, rewards and sanctions

Our Ten Expectations

To make life easy for students, staff and parents we have created a list of ten simple expectations. These are split into five that apply **inside the classroom** and five that apply **outside the classroom** (e.g. during break, lunch and on the corridors).

You'll see these posters in all your classrooms and on large display boards around the school. Your teachers will refer to them regularly as they ensure our school is a calm, safe and purposeful place to learn and grow.




Millthorpe
School



Inside the classroom, you are expected to:

-  Arrive on time with all your equipment
-  Follow all instructions from adults
-  Listen to learn
-  Take pride in your work
-  Aim to be a gold standard learner

RESPECTFUL | RESPONSIBLE | READY



ALLOWING TEACHERS TO TEACH AND STUDENTS TO LEARN



Millthorpe
School



Outside the classroom, you are expected to:

-  Follow all instructions from adults
-  Be polite and kind to everyone
-  Be safe, calm & sensible
-  Look after and care for our school
-  Eat in dining spaces and tidy up after yourself

RESPECTFUL | RESPONSIBLE | READY



CREATING A POSITIVE COMMUNITY FOR ALL

Be your best:

Rights, expectations, rewards and sanctions

Rewards

We are currently working on ways to develop our rewards system further, you might even become involved in a student working party that looks at new ways to motivate your peers. Rewards are built around the stamp page in your planner. You will be given a stamp when displaying Gold Standard Learner qualities. This can be in lessons or around school and you will get lots of them, providing you go above and beyond on a regular basis.

Students that receive a lot of stamps will be celebrated in weekly assemblies, in our weekly Friday email to parents and in the half termly Millthorpe Newsletter. This year we are organising a Southbank Trust celebration event where students from across our primary and secondary schools come together to recognise the amazing achievements our students make

both inside and outside of school. Just imagine how proud your parents will be if you are invited to this event in a year's time! It's important that you know that we celebrate students' hard work and dedication to their studies, not just the students that get the best marks. If you find something really difficult but show your teacher that you are resilient and persevere, we will spot this and give you the recognition you deserve.

Sanctions

Like all schools, we do have to have sanctions (detentions) if a student makes a mistake. We are fair, reasonable and consistent. If you fall short of the five classroom expectations, your teacher will ask for your planner and place it in a white tray. You have not been given a point at this stage. Removing your planner is a clear visual sign that you need to alter

your approach to the lesson. Your teacher will politely and privately tell you what you need to do to get back on track. If the off-task behaviour continues you will be given a point in your planner. A brief written reason is given so your tutor and parent/carer can support you. If you get three points in a lesson you will have to leave that room to allow the teacher to teach and the rest of the students to learn.

If a student picks up five planner points within a half term then they receive a lunch detention. If a student receives a number of points, they clearly need some support to meet the ten expectations and our 3Rs, so they would go on **form tutor report** to secure improvements.

Teachers can make your lesson more fun and interesting when the **five classroom expectations** (see *previous page*) are followed.

Be your best:

Rights, expectations, rewards and sanctions

Anti-Bullying

Please let us reassure you that bullying is very unusual at Millthorpe and we are clear that it is totally unacceptable.

That said, all good schools understand that bullying could happen anywhere, and they have a clear plan in place just in case it does. At Millthorpe, we have a very clear anti-bullying policy. This is explained on a page in your planner and it is also on our website.

In simple terms, if something happens that upsets you or you are unhappy about, just let us know; we take all concerns seriously and ensure they are dealt with promptly.

You can speak to your form tutor, Deputy Head of Year, Head of Year or any other member of staff in school. There is also a **Report Bullying** button on the school website or you can speak to a friend, an older student, one of the Student Leaders or your



parents/carers and ask them to speak to a member of staff for you.

Any bullying is recorded by the pastoral team and monitored to see if the actions we have taken have successfully supported the victim. We need to know if this issue persists and new strategies will be put

in place to address the issue. We do promise to address any bullying and will keep coming back to the issue if it persists.

For us to be successful in addressing bullying, students have to talk to us and support one another to make it clear that bullying is acceptable.

Be your best:

Rights, expectations, rewards and sanctions

Will you help me to make sure that I get it right?

Of course we will! All of the teachers in school will work with you and support you to make sure that you are making positive choices and meet our expectations.

Your form tutor, Deputy Head of Year and Head of Year will also help you if you need further support.



Mrs Cooper
Head of Year



Mr Hunt
Deputy Head of Year

We will all work together to make sure that everyone is **Respectful**,

Responsible and **Ready** so that we can be the best that we can be.

We will send you an introduction to your form tutor in a few weeks so that you know who they are, what they look like, and can find out a little bit about them. Your **Head of Year is Mrs Cooper**, and your **Deputy Head of Year is Mr Hunt**.

What other support is available at Millthorpe School?

Every student is different and at Millthorpe, we work with everyone to make sure that they are

included, are able to learn and are able to take full advantage of the wonderful opportunities that are available.

Some students may need a bit

of additional support which is different to what other people need. They may have a specific need or require help in a particular area. We will work with you and your families to make sure that we provide the correct support for you. We will send another document to you soon, which is a welcome from, and introduction to

our **Inclusion Department**.

If you are currently receiving extra support from your school SEND department, have a medical condition, disability or just need a little bit more support, please look out for this in the coming weeks as this will explain the extra layer of support on offer and answer any questions that you may have.



Be your best: Answers to FAQs

1 What happens if I do not demonstrate the 3Rs

We expect everyone in school to demonstrate the 3Rs and to become the best that we can be. If you are struggling to do this, the staff in school will help and support you to make sure that you can.

You might need to serve detentions or go on Report to your form tutor if you do not meet our **Ten Expectations**. We will help you with this, but you must come to Millthorpe with the right attitude. Being polite and kind helps us create a lovely safe place for us all to enjoy.

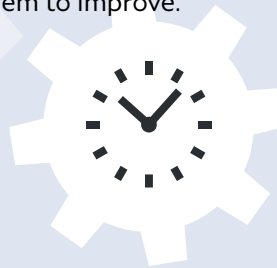
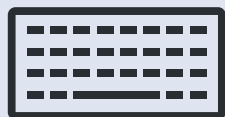
2 What are the other levels for Learning Conduct?

As we said, we want everyone to aim for Gold. The other three levels are Green, Amber and Red. We will explain what each of the levels means when you join us. Students who reach Gold tend to be really successful at Millthorpe and achieve above their expected grades (we have more than five years' worth of data to prove this); students who reach Green tend to do as expected – these are the learning behaviours that we want all students to demonstrate. Students who get Amber or Red learning conduct scores are not trying hard enough and we will work with them to improve.

3 If I did get a detention, what would happen in that time?

In the unlikely event that you had to serve a detention, you would be expected to reflect on what had gone wrong to result in a detention. A member of staff might come and talk to you about what happened and we will ask that you complete a reflection resource. The aim is for you to understand what went wrong, why, and then think of a plan for how you can improve.

If your detention is because you have not completed your homework after being given an extension, you would need to complete your homework in this time. The sanction is needing to serve the detention; we won't be unpleasant towards you or make you write lines! But remember, most students never need to serve detentions.



Be your best: Answers to FAQs

4 What happens if I forget to go to a detention?

The sanction will be increased. If you did not attend a 30 minute detention, you would get a 60 minute detention. If you forgot to attend either of these, you would be placed in Internal Exclusion for three lessons the next day.

As you can see, the sanction just increases and does not go away, so in the unlikely event that you do get a detention, make sure you serve it at the lowest possible level. Your parents will have been informed via a text message, your form tutor will inform you in Registration in the morning. So, it is really unlikely that you would forget.

Of course, the best course of action is to avoid getting detentions altogether – just like most students at Millthorpe!

5 What rewards can we look forward to?

We are working on ways to improve these at the moment, but things like positive letters home; York independent shops gift vouchers; termly prizes like Christmas gifts or Easter eggs; having your name displayed on the **Praise Board** and a **Golden Ticket** to bypass the queue at break or lunch with a friend. We also hope to be able to arrange some reward trips for students who get lots of stamps.

6 What do I do if I am really worried about bullying?

It is natural to be a little bit nervous about bullying as you move to a new, and bigger, school. Try to not worry, as we simply do not tolerate bullying at Millthorpe. If you are really worried, make sure that you talk to your form tutor and they will help to put your mind at ease. They will also help you to make friends and join clubs if you need some support.



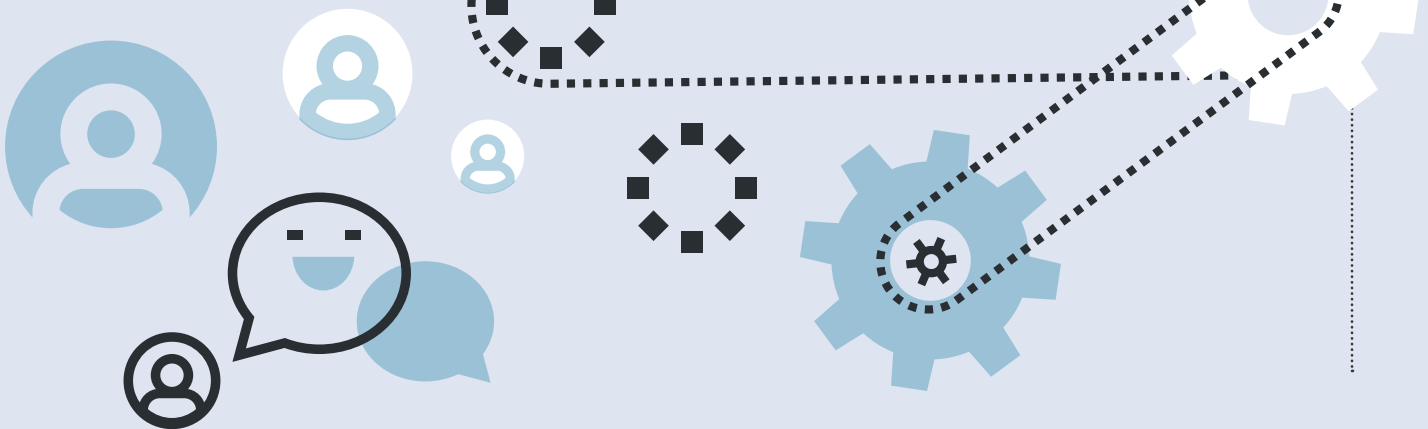


Be your best: Answers to FAQs

7 Who will help me to meet expectations?

The first person is yourself! Make sure that you arrive with a positive attitude and a desire to be the best that you can be. Of course, your family will also help you with this. In school, every member of staff will support you to make sure that everything goes well.

Your subject teachers, form tutor, Deputy Head of Year, Head of Year, the rest of the Pastoral Team, the Senior Leadership Team and also you peers; your classmates and older students who can offer you help or advice. The Inclusion Team can also provide additional support if you need it.



See you all soon...

Thank you reading all of this information. Next week's edition of *Moving to Millthorpe* will cover your new school uniform, fun activities, clubs, trips, and some 'Top Tips from Year 7s.' Look out for this next Friday! In the meantime, take care and see you all soon!

