



Millthorpe  
School

# Moving to Millthorpe

TRANSITION UPDATE: **Our Inclusion Team**



# Welcome from the Inclusion Team at Millthorpe School

## Hello – a big welcome to you all!

We are really looking forward to meeting you soon and making plans to ensure that your transition across to Millthorpe School goes really well. In school about one in ten students need something a bit

different. Some students need a hand with literacy or numeracy, some with making friends or making the right choices in difficult situations, some with medical needs, and some with managing emotions.

This list changes every year to include everyone who needs additional support.

The SEND leads and I (**Mrs Norman**) are already working hard to make sure everything goes well for you when you move across.



**Mrs Norman**  
Assistant  
Headteacher  
and SENDCo



**Mrs Reading**  
SEND Lead –  
SEMH



**Mrs Bradsell**  
SEND Lead –  
Cognition and  
Learning



**Mrs Smith**  
SEND Lead –  
Sensory  
Physical



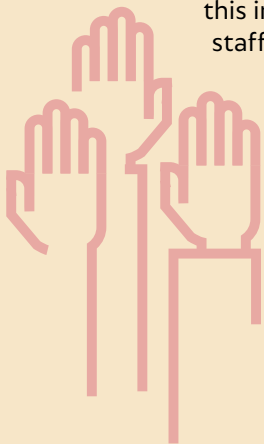
**Mrs Powell**  
SEND Lead –  
Interaction and  
Communication

# Inclusion Team:

## Your questions answered

### How do you gather and share information about me?

At the moment we are having meetings with all of your SENDCos and teachers to get together all the information there is to know about you. We ask what you find easy and what you find hard. We ask what teachers and teaching assistants need to do to make your day successful. We ask if there is anything different that you may need throughout your day. Our job is to share this information with all staff who you meet and teach you. They will understand your needs before you even step foot in the classroom. We will also share it with you and your parents or carers.



### I struggle with literacy and numeracy

Some students work with teaching assistants three or four times a week outside the classroom to catch up on these important subjects. We try to ensure that you don't miss the same lesson each week. It may be, for example, a French lesson one week, then a Geography lesson the next week.

We will always let you and your parents or carers know before we do something like this, and we will always let you know what a difference it has made when you've finished. We usually have amazing results with these interventions and sometimes they are not to do with subjects but instead focusing on social skills, social stories or zones of regulation. You may have already done some of these at primary school.

### Do you have teaching assistants in lessons at Millthorpe?

Students who are used to having lots of support from an additional adult in class, will likely receive support from teaching assistants at Millthorpe.

You will be learning in mixed ability classes like you do at primary but the teaching assistant allocated will know all about you and others in class who need some support. This is quite normal and you won't feel different as the teaching assistant will work with several or all students in the class.



# Inclusion Team:

## Your questions answered

### Where do I go if I'm stuck or have a problem?

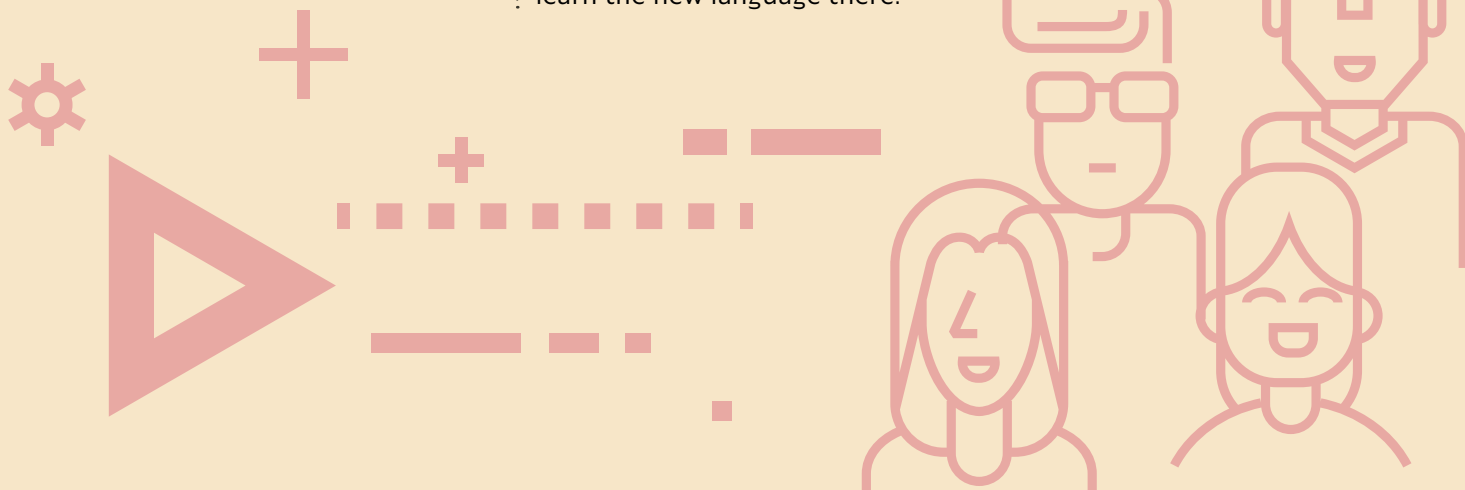
In school we have two learning support classrooms (LSCs). In this room you will always find a friendly teacher or teaching assistant who knows you very well. They will help you out. There are also pastoral offices in school where you can talk to your Head of Year or SEND offices where you can talk to your SEND lead.

### What else happens in the LSCs?

This room is for students who we know may need extra help. We also deliver literacy and numeracy sessions in this space. Some students keep equipment there; some students work there away from the classroom if they need peace and quiet and some students who are new to English may learn the new language there.

### What if I need help at break or lunch time?

The LSC1 is open at these times and you can go there to meet up with friends and eat their lunch. There are lots of clubs that run at lunchtime and we can help you access these.





# Inclusion Team:

## Your questions answered

### What do I do if I still have a question?

You can email Mrs Norman on: [m.wright@millthorpe.southbank.academy](mailto:m.wright@millthorpe.southbank.academy)

(my email has my maiden name, I am getting married during May half term).

I will either reply or put you in contact with the correct SEND lead, who will answer your questions.

